

Autodesk Official Training Guide

Essentials

# Autodesk® Vault 2010

## Learning Autodesk® Vault 2010

Using hands-on exercises, learn how to organize and share files, manage file versions, work in multi-user environments, and integrate with various Autodesk® products.

**© 2009 Autodesk, Inc. All rights reserved.**

Except as otherwise permitted by Autodesk, Inc., this publication, or parts thereof, may not be reproduced in any form, by any method, for any purpose.

Certain materials included in this publication are reprinted with the permission of the copyright holder.

**Trademarks**

The following are registered trademarks or trademarks of Autodesk, Inc., and/or its subsidiaries and/or affiliates in the USA and other countries: 3DEC (design/logo), 3December, 3December.com, 3ds Max, ADI, Algor, Alias, Alias (swirl design/logo), AliasStudio, Alias|Wavefront (design/logo), ATC, AUGI, AutoCAD, AutoCAD Learning Assistance, AutoCAD LT, AutoCAD Simulator, AutoCAD SQL Extension, AutoCAD SQL Interface, Autodesk, Autodesk Envision, Autodesk Intent, Autodesk Inventor, Autodesk Map, Autodesk MapGuide, Autodesk Streamline, AutoLISP, AutoSnap, AutoSketch, AutoTrack, Backburner, Backdraft, Built with ObjectARX (logo), Burn, Buzzsaw, CAiCE, Can You Imagine, Character Studio, Cinestream, Civil 3D, Cleaner, Cleaner Central, ClearScale, Colour Warper, Combustion, Communication Specification, Constructware, Content Explorer, Create>what's>Next> (design/logo), Dancing Baby (image), DesignCenter, Design Doctor, Designer's Toolkit, DesignKids, DesignProf, DesignServer, DesignStudio, Design|Studio (design/logo), Design Web Format, Discreet, DWF, DWG, DWG (logo), DWG Extreme, DWG TrueConvert, DWG TrueView, DXF, Ecotect, Exposure, Extending the Design Team, Face Robot, FBX, Fempro, Filmbox, Fire, Flame, Flint, FMDesktop, Freewheel, Frost, GDX Driver, Gmax, Green Building Studio, Heads-up Design, Heidi, HumanIK, IDEA Server, i-drop, ImageModeler, iMOUT, Incinerator, Inferno, Inventor, Inventor LT, Kaydara, Kaydara (design/logo), Kynapse, Kynogon, LandXplorer, Lustre, MatchMover, Maya, Mechanical Desktop, Moldflow, Moonbox, MotionBuilder, Movimento, MPA, MPA (design/logo), Moldflow Plastics Advisers, MPI, Moldflow Plastics Insight, MPX, MPX (design/logo), Moldflow Plastics Xpert, Mudbox, Multi-Master Editing, NavisWorks, ObjectARX, ObjectDBX, Open Reality, Opticore, Opticore Opus, Pipeplus, PolarSnap, PortfolioWall, Powered with Autodesk Technology, Productstream, ProjectPoint, ProMaterials, RasterDWG, Reactor, RealDWG, Real-time Roto, REALVIZ, Recognize, Render Queue, Retimer, Reveal, Revit, Showcase, ShowMotion, SketchBook, Smoke, Softimage, Softimage|XSI (design/logo), Sparks, SteeringWheels, Stitcher, Stone, StudioTools, Topobase, Toxik, TrustedDWG, ViewCube, Visual, Visual Construction, Visual Drainage, Visual Landscape, Visual Survey, Visual Toolbox, Visual LISP, Voice Reality, Volo, Vtour, Wire, Wiretap, WiretapCentral, XSI, and XSI (design/logo).

All other brand names, product names, or trademarks belong to their respective holders.

**Disclaimer**

THIS PUBLICATION AND THE INFORMATION CONTAINED HEREIN IS MADE AVAILABLE BY AUTODESK, INC. "AS IS." AUTODESK, INC. DISCLAIMS ALL WARRANTIES, EITHER EXPRESS OR IMPLIED, INCLUDING BUT NOT LIMITED TO ANY IMPLIED WARRANTIES OF MERCHANTABILITY OR FITNESS FOR A PARTICULAR PURPOSE REGARDING THESE MATERIALS.

Published by:  
Autodesk, Inc.  
111 McInnis Parkway  
San Rafael, CA 94903, USA

# Contents

<b>Introduction .....</b>	<b>ix</b>
<b>Chapter 1: Introduction to Autodesk Vault .....</b>	<b>1</b>
Lesson: Vault Overview .....	2
About Vault .....	3
Autodesk Data Management Server .....	11
Vault Clients .....	14
A Typical Workflow .....	16
Extending Vault .....	18
Chapter Summary .....	19
<b>Chapter 2: Basic Vault Tasks .....</b>	<b>21</b>
Lesson: Accessing the Vault .....	22
About Vault Clients .....	23
About Autodesk Vault .....	25
Vault Add-ins .....	28
Logging in to Vault .....	29
Lesson: Autodesk Vault User Interface .....	32
Vault Explorer UI .....	33
Navigation Pane .....	35
Main Pane .....	37
Preview Pane .....	39
Shortcuts and Saved Searches .....	43
Exercise: Use the Vault Interface .....	45
Lesson: Working with Files and the Vault .....	47
Folder Structure .....	48
Adding Files .....	50
Working on Files .....	51
File Status .....	55
Versions of Files .....	58
Exercise: Perform Basic Vault Tasks .....	63
Chapter Summary .....	66

<b>Chapter 3: Working with Vault and Autodesk Inventor .....</b>	<b>67</b>
Lesson: Adding Inventor Models to a Vault .....	68
How Autodesk Inventor Files Are Organized .....	69
Autodesk Autoloader .....	72
Adding Inventor Files to a Vault .....	74
Exercise: Add Existing Projects .....	77
Lesson: Common Vault Tasks in Inventor .....	80
Autodesk Vault for Inventor .....	81
Typical Edit Workflow .....	85
Getting Files from a Vault .....	88
Editing Inventor Files .....	91
Saving Files to a Vault .....	93
Exercise: Edit Inventor Files .....	97
Lesson: Working With Vault in Inventor .....	102
Placing Files from a Vault .....	103
Updating Parent Files .....	104
Adding a New Design .....	106
Streamlining Vault Workflows .....	108
Exercise: Place Inventor Files .....	110
Chapter Summary .....	114
<b>Chapter 4: Working with Vault and AutoCAD .....</b>	<b>115</b>
Lesson: Opening and Accessing the Vault in AutoCAD .....	116
Opening and Accessing the Vault in AutoCAD .....	117
Exercise: Access the Vault .....	119
Lesson: Working with AutoCAD Files .....	121
Typical Workflow for AutoCAD and Vault .....	122
Use a Shared Workspace .....	124
Check In and Check Out Drawings .....	126
Open from Vault .....	131
Attach from Vault .....	132
Exercise: Check Files In and Out of the Vault .....	134
Lesson: Working with External References in AutoCAD .....	137
External References Palette .....	138
External References Palette and the Vault .....	140
Exercise: Use the External References Palette .....	143
Chapter Summary .....	146

<b>Chapter 5: Working with Vault and AutoCAD Electrical .....</b>	<b>147</b>
Lesson: Working with AutoCAD Electrical Files .....	148
Opening and Accessing .....	149
Typical Workflow .....	151
Use a Shared Workspace .....	154
Check In Projects and Drawings .....	156
Check Out Projects and Drawings .....	160
Open from Vault .....	163
Attach from Vault .....	165
Exercise: Access the Vault .....	168
Chapter Summary .....	172
<b>Chapter 6: Working with Vault and AutoCAD Mechanical .....</b>	<b>173</b>
Lesson: Working with AutoCAD Mechanical Files .....	174
Opening and Accessing .....	175
Typical Workflow .....	176
Use a Shared Workspace .....	178
Check In and Check Out Drawings .....	180
Open from Vault .....	185
Attach from Vault .....	186
Exercise: Check Files In to the Vault .....	189
Lesson: Working with External References in AutoCAD	
Mechanical .....	191
External References Palette .....	192
External References Palette and the Vault .....	194
Exercise: Attach a Drawing from the Vault .....	197
Chapter Summary .....	199
<b>Chapter 7: Common Vault Tasks .....</b>	<b>201</b>
Lesson: Customizing Views .....	202
Customizing the Panes .....	203
File Properties .....	205
Viewing File Properties .....	206
Saving Customized Views .....	209
Exercise: Customize Vault Explorer Views .....	210
Lesson: Finding Files .....	213
Finding Files .....	214
Basic Find .....	216
Advanced Find .....	219
Using Search .....	220
Defining Custom Filters .....	222
Saving Searches .....	224
Shortcuts .....	227
Exercise: Find Files in the Vault .....	229

Lesson: Managing Versions .....	232
File Versions .....	233
Viewing File History .....	236
Getting a Previous Version .....	237
Getting the Latest Version .....	239
Reverting to a Previous Design .....	240
Labeling Designs .....	242
Exercise: Manage File Versions .....	244
Lesson: Renaming and Moving Files .....	248
File Dependencies and Vault .....	249
Renaming Files .....	251
Moving Files .....	254
Exercise: Rename and Move Files .....	256
Lesson: Reusing Designs .....	259
About Copy Design .....	260
Using Copy Design .....	261
Exercise: Copy Designs with Autodesk Vault .....	263
Lesson: Using Vault Files Outside of the Vault Environment .....	267
About Pack and Go .....	268
Using Pack and Go .....	271
Exercise: Pack and Go .....	273
Lesson: Managing Properties .....	275
Viewing Properties .....	276
Editing File Properties .....	280
Exercise: Edit File Properties .....	282
Lesson: Replacing Files .....	285
Replacing Files .....	286
Exercise: Replace Files .....	288
Chapter Summary .....	290
<b>Chapter 8: Organizing and Populating a Vault .....</b>	<b>291</b>
Lesson: How Inventor Files Are Organized .....	292
About Project Files .....	293
About Model Files .....	296
About Library Files .....	298
About Content Center Files .....	301
Lesson: Adding Existing Models to a Vault .....	303
Preparing Models .....	304
Uploading Models .....	307
Exercise: Add Existing Projects to a Vault .....	311
Chapter Summary .....	315

<b>Chapter 9: Managing Vault .....</b>	<b>317</b>
Lesson: Setting Up Vault .....	318
Components of Autodesk Vault .....	319
Creating Vaults .....	322
Setting the Environment .....	323
Exercise: Create and Set Up a Vault .....	330
Lesson: Managing Users and Access .....	333
Creating Users and Groups .....	334
Exercise: Manage Users and Access .....	339
Lesson: Managing File Properties .....	341
Renaming Properties .....	342
Changing Property States .....	343
Merging Properties .....	344
Adding AutoCAD Attributes .....	347
Adding Other Properties .....	348
Re-Indexing Vault Databases .....	349
Exercise: Manage File Properties .....	351
Lesson: Backing Up and Restoring Vaults .....	354
Backing Up a Vault .....	355
Restoring a Vault .....	358
Exercise: Back Up and Restore a Vault .....	360
Lesson: Maintaining Vault .....	362
Viewing Vault Statistics .....	363
Purging Versions .....	367
Tracking File Status .....	370
Indexing File Contents .....	372
Exercise: Perform Vault Maintenance .....	374
Chapter Summary .....	377
 <b>Appendix .....</b>	 <b>379</b>



# Introduction

Welcome to the *Learning Autodesk Vault 2010* training guide for use in Authorized Training Center (ATC®) locations, corporate training settings, and other classroom settings.

Although this guide is designed for instructor-led courses, you can also use it for self-paced learning. The guide encourages self-learning through the use of the Autodesk® Vault Help system.

This introduction covers the following topics:

- Course objectives
- Prerequisites
- Using this guide
- CD contents
- Completing the exercises
- Installing the exercise data files from the CD
- Notes, tips, and warnings
- Feedback

This guide is complementary to the software documentation. For detailed explanations of features and functionality, refer to the Help in the software.

## Course Objectives

After completing this guide, you will be able to:

- Describe the features and functionality of Autodesk Vault.
- Log in to Vault and work with non-CAD files using Autodesk Vault and the Vault add-in for Microsoft Office.
- Add existing Autodesk Inventor models to a vault and work with Inventor files from the vault.
- Add existing AutoCAD drawings to a vault and work with AutoCAD files from the vault.
- Add an AutoCAD Electrical project to a vault and work with AutoCAD Electrical files from the vault.
- Add existing AutoCAD Mechanical drawings to a vault and work with AutoCAD Mechanical files from the vault.
- Perform common everyday tasks using Autodesk Vault.
- Organize Autodesk Inventor files for best results with Vault.
- Set up Vault, manage users and file properties, and back up and restore your vaults.

## Prerequisites

This course is designed to teach new users the essential elements of using Autodesk Vault 2010 for managing files and projects.

The primary focus of this guide is on using Autodesk Vault with Autodesk® Inventor®. The guide also includes lessons on working with other products such as AutoCAD®, AutoCAD® Mechanical, and AutoCAD® Electrical.

It is recommended that you have a working knowledge of one or more of the following products:

- Microsoft® Office
- Autodesk Inventor 2010
- AutoCAD 2010
- AutoCAD Mechanical 2010
- AutoCAD Electrical 2010
- Microsoft® Windows® XP or Microsoft® Windows® Vista

## Using This Guide

The lessons are independent of each other. However, it is recommended that you complete these lessons in the order that they are presented unless you are familiar with the concepts and functionality described in those lessons.

Each chapter contains:

### Lessons

Usually two or more lessons in each chapter.

### Exercises

Practical, real-world examples for you to practice using the functionality you have just learned. Each exercise contains step-by-step procedures and graphics to help you complete the exercise successfully.

## CD Contents

The CD attached to the back cover of this book contains all the data and drawings you need to complete the exercises in this guide.

## Completing the Exercises

You can complete the exercise in two ways: using the book or on screen.

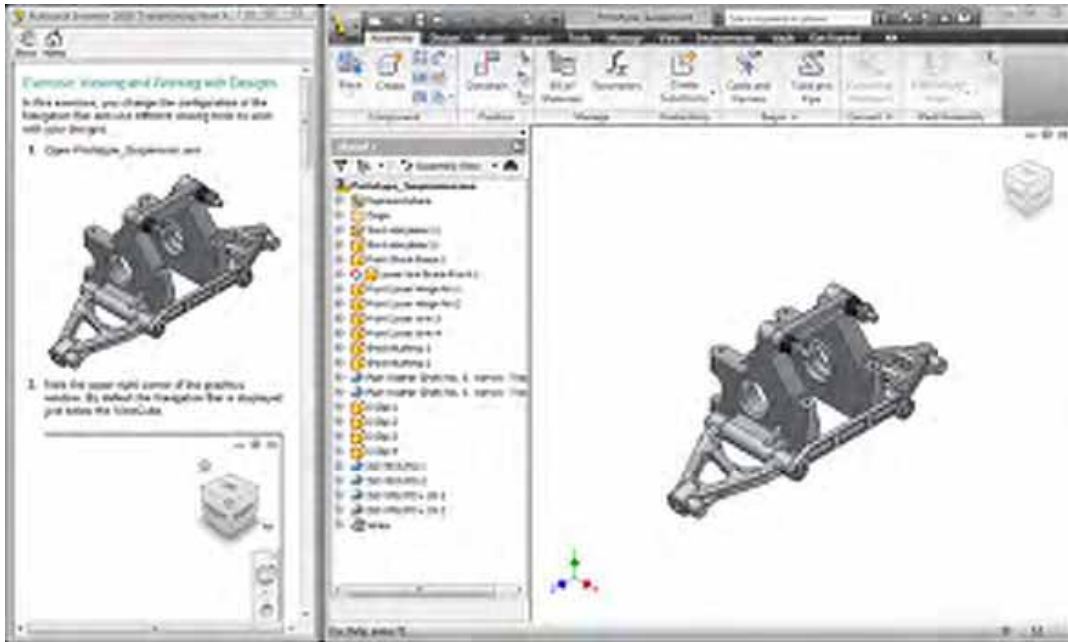
Using the book

Follow the step-by-step exercises in the book.

On screen

Click the Learning Autodesk Vault 2010 icon on your desktop, installed from the CD, and follow the step-by-step exercises on screen. The onscreen exercises are the same as those in the book.

The onscreen version has the advantage that you can concentrate on the screen without having to glance down at your book.



After launching the onscreen exercises, you might need to alter the size of your application window to align both windows.

### Installing the Exercise Data Files from the CD

To install the data files for the exercises:

1. Insert the CD.
2. Double-click the self-extracting archive *setup.exe*.

Unless you specify a different folder, the exercise files are installed in the following folder:

*C:\AOTGVault*

After you install the data from the CD, this folder contains all the files necessary to complete each exercise in this guide.

## Notes, Tips, and Warnings

Throughout this guide, notes, tips, and warnings are called out for special attention.



Notes contain guidelines, constraints, and other explanatory information.



Tips provide information to enhance your productivity.



Warnings provide information about actions that might result in the loss of data, system failures, or other serious consequences.

## Feedback

We always welcome feedback on Autodesk Official Training Guides. After completing this course, if you have suggestions for improvements or if you want to report an error in the book or on the CD, please send your comments to [learningtools@autodesk.com](mailto:learningtools@autodesk.com).

# Course and Classroom Setup

Before you start the course, you must install Autodesk Vault and the course data sets.

## Installation Scenarios

You must install and run this courseware from individual computers. You cannot run the courseware from a shared server. Do not install the courseware on a computer that stores your working vault data.

## Overview of Installing the Courseware

The following steps describe how to install the courseware.

1. Install Autodesk Vault and Autodesk Data Management Server Console on each computer.
2. Install the course data sets on each computer.
3. If Autodesk Vault has been previously used on the computer, restore default settings for the user interface.

## Installing Autodesk Vault

Install both Autodesk Vault and Autodesk Data Management Server Console on each computer. See the Autodesk Vault installation media for installation instructions. If you have previously installed Autodesk® Productstream® on a computer, you must remove Autodesk Productstream and Autodesk Data Management Server Console (Productstream) before installing Vault Explorer and ADMS for vault.

For normal use, you must install Microsoft Internet Information Server (IIS) before installing Autodesk Data Management Server Console. Because the course is designed to run on individual computers, you can use the Autodesk Personal Web Server, which is installed automatically during installation if you choose not to use IIS.

## Course Setup Information

By default, the data files for each exercise are placed in the *C:\AOTGVault* folder. Be aware that if you select a different installation location, you may need to manually edit some of the supplied project files to modify their library search paths. These folders contain parts, assemblies, drawing library files, and other files required by the exercises.

The exercises are designed to be used back-to-back from start to finish. It is recommended that you log in to Autodesk Vault at the beginning of each exercise and when finishing an exercise, you should exit Autodesk Vault. The chapter folders contain subfolders holding documents for the chapter exercises.

If you are using any of the following Autodesk® software applications in conjunction with Autodesk Vault, they must be installed before installing Autodesk Vault:

- Autodesk Inventor 2010
- AutoCAD 2010
- AutoCAD Mechanical 2010
- AutoCAD Electrical 2010

## Classroom Environment

The courseware is intended for use in an instructor-led environment. If you plan to use the courseware on your own in a non-classroom environment, you must set up Autodesk Vault correctly. Before you set up your system, you should be aware of the following:

Do not use a production vault for the exercises. It is recommended that you set up a separate vault on a separate vault server.

If you plan to repeat an exercise, you must remove any files that were added to the vault when you previously completed the exercise. It is recommended that you delete the entire vault and start again with a new vault.

Do not attempt these exercises on a production vault server until you are familiar with the procedures that are covered.



### Warning!

If you have installed AutoCAD or AutoCAD based products after installing the Autodesk Data Management Server, you may need to 'repair' the Autodesk Data Management Server installation using Add/Remove programs. If you have not run the repair, you may see different results when working with some of the exercises.

## Setting up the Course

Before you start any exercise, you need to perform the basic setup for this course. You must:

- Create a vault
- Add a user

Note: You must have Autodesk Vault installed.

### Create a Vault

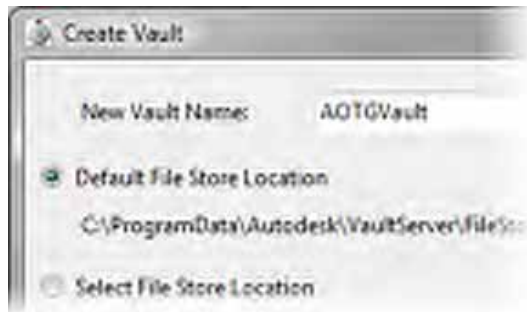
1. Click Start menu > All Programs > Autodesk > Autodesk Data Management > Autodesk Data Management Server Console 2010.
2. In the Log In dialog box:
  - For User Name, enter **administrator**.
  - Leave Password blank.
  - Click OK.

Autodesk Data Management Server Console 2010 is displayed.

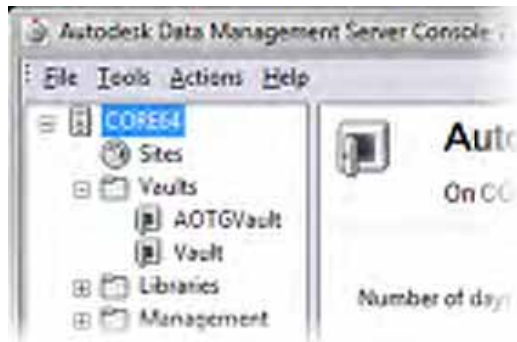


3. Right-click Vaults. Click Create.

4. In the Create Vault dialog box, in New Vault Name, enter **AOTGVault**. Click OK.



5. Click OK. The vault is added to the list of vaults.



## Add a User

1. Click Tools menu > Administration.
2. On the Security tab, click Users.
3. In the User Management dialog box, click New User.
4. In the New User dialog box, enter the following information:
  - In First Name, enter **Vault**.
  - In Last Name, enter **User**.
  - In User Name, enter **vaultuser**.
5. Leave Password and Confirm Password blank.
6. Click Roles.
  - In the Add Roles dialog box, select **Document Editor (Level 2)**.
  - Click OK.

7. Click Vaults.  
Select **AOTGVault** for the user, and then click OK.  
Make sure that Enable User is checked.  
Click OK.



8. Close the New User dialog box.
9. Click Close to return to Autodesk Data Management Server Console 2010.
10. Exit Autodesk Data Management Server Console 2010.

## Course Workflow

The following table outlines dependencies between course exercises. Exercises in some chapters can be completed without first completing exercises in previous chapters.

<b>Chapter</b>	<b>Exercises</b>
Introduction	You must complete the setup instructions in this chapter. No exercises are included in this chapter.
Chapter 1: Introduction to Autodesk Vault	No exercises are included in this chapter.
Chapter 2: Basic Vault Tasks	The exercises in this chapter are the first course exercises. You must complete the exercises in the order they are presented.
Chapter 3: Working with Vault and Autodesk Inventor	It is recommended that you complete the exercises in this chapter after completing the exercises in the Basic Vault Tasks chapter. If you choose to complete the exercises in this chapter without completing the previous exercises, some screen captures in the exercises will differ from your views of files in the vault.
Chapter 4: Working with Vault and AutoCAD	It is recommended that you complete the exercises in this chapter after completing the exercises in the Working with Vault and Autodesk Inventor chapter. If you choose to complete the exercises in this chapter without completing the previous exercises, some screen captures in the exercises will differ from your views of files in the vault.
Chapter 5: Working with Vault and AutoCAD Electrical	It is recommended that you complete the exercises in this chapter after completing the exercises in the Working with Vault and Autodesk Inventor chapter. If you choose to complete the exercises in this chapter without completing the previous exercises, some screen captures in the exercises will differ from your views of files in the vault.
Chapter 6: Working with Vault and AutoCAD Mechanical	It is recommended that you complete the exercises in this chapter after completing the exercises in the Working with Vault and Autodesk Inventor chapter. If you choose to complete the exercises in this chapter without completing the previous exercises, some screen captures in the exercises will differ from your views of files in the vault.
Chapter 7: Common Vault Tasks	You must complete the exercises in the Working with Vault and Autodesk Inventor chapter before you can complete the exercises in this chapter.
Chapter 8: Organizing and Populating a Vault	You can complete the exercises in this chapter without completing previous course exercises.
Chapter 9: Managing Vault	You can complete the exercises in this chapter without completing previous course exercises. Some screen captures may differ slightly from your view of files in the vault.

## Digital Prototyping

A digital prototype is created with Autodesk® Inventor® software and is a digital simulation of a product that can be used to test form, fit, and function. The digital prototype becomes more and more complete as all associated industrial, mechanical, and electrical design data are integrated. A complete digital prototype is a true digital representation of the entire end product and can be used to visualize and simulate a product to reduce the necessity of building expensive physical prototypes.



## What is Digital Prototyping?

Digital Prototyping gives conceptual design, engineering, and manufacturing departments the ability to virtually explore a complete product before it becomes real. With Digital Prototyping, manufacturers can design, visualize, and simulate products from the conceptual design phase through the manufacturing process, boosting the level of communication with different stakeholders while getting more innovative products to market faster. By using a digital prototype created in Inventor, manufacturers can visualize and simulate the realworld performance of a design digitally, helping reduce their reliance on costly physical prototypes.

## What is the Autodesk Solution for Digital Prototyping?

Autodesk Inventor software takes manufacturers beyond 3D to Digital Prototyping. With Inventor, you can create a single digital model that gives you the ability to design, visualize, and simulate your products:

**Design:** Integrate all design data into a single digital model, streamlining the design process and increasing communication.

**Visualize:** Create a virtual representation of the final product to review design intent, secure early customer validation, and market products before they're built.

**Simulate:** Digitally simulate the real-world performance of your product, saving the time and money required to build multiple physical prototypes.

Inventor enables manufacturers to create a digital prototype, helping reduce reliance on costly physical prototypes and get more innovative products to market faster. The Autodesk® solution for Digital Prototyping brings together design data from all phases of the product development process into a single digital model created in Inventor.

## What Pain Points Does Digital Prototyping Address?

The manufacturing product development process today is dominated by islands of competency, each presenting its own technical challenges:

In the conceptual design phase, industrial designers and engineers often use paperbased methods or digital formats that are incompatible with the digital information used in the engineering phase. A lack of digital data, compatible formats, and automation keeps this island separate from engineering—the conceptual design data must be recreated digitally downstream, resulting in lost time and money.

In the engineering phase, mechanical and electrical engineers use different systems and formats, and a lack of automation makes it difficult to capture and rapidly respond to change requests from manufacturing. Another problem in the engineering phase: the geometric focus of typical 3D CAD software makes it difficult to create and use a digital prototype to validate and optimize products before they are built, making it necessary to build multiple costly physical prototypes. Manufacturing is at the downstream end of all the broken digital processes—the disconnection between the conceptual design phase, the engineering components, electrical, and mechanical—and they receive this analog information in the form of drawings. The result is a heavy reliance on physical prototypes and the subsequent impact on productivity and innovation.

Disconnected product development processes make it difficult to bring customer and marketing requirements into the process early so customers can see exactly what the product will look like and validate how it will function before it is delivered. The inability to involve the customer early in the product development process means that the customer can't validate a design before

the product goes to manufacturing. Customer requests for changes become exponentially more expensive to address the further along the product is in the manufacturing process. The result: companies have to build multiple physical prototypes for customer validation.

## Hasn't the Concept of Digital Prototyping Been Around for Years?

Although there has been talk about the benefits of Digital Prototyping for years, the budget for the tools required to build and test a true digital prototype has been out of reach for most manufacturing companies. Digital Prototyping solutions are usually expensive, customized installations for large enterprises. Most out-of-the-box 3D modeling applications provide only part of the functionality needed to create a complete digital prototype.

## What is Unique About the Autodesk Approach to Digital Prototyping?

**Scalable:** The Autodesk solution for Digital Prototyping is scalable, flexible, and easy to integrate into existing business processes. Using Inventor to create a single digital model, manufacturers can realize the benefits of Digital Prototyping at their own pace, with minimal disruption to existing productive workflows.

**Attainable:** The Autodesk solution for Digital Prototyping provides an easy to deploy and manage solution for mainstream manufacturers to create and maintain a single digital model that can be used in all stages of production.

**Cost-effective:** Delivering cost-effective software for design and manufacturing workgroups, an Inventor-based Digital Prototyping solution delivers the fastest path to ROI. Autodesk has a proven record of making powerful desktop technology available to mainstream manufacturers.

## How Do the Autodesk Manufacturing Products and Technology Drive Digital Prototyping?

Inventor takes you beyond 3D to Digital Prototyping. The Autodesk solution for Digital Prototyping enables manufacturing workgroups to develop a single digital model, created in Inventor, that can be used in every stage of production—bridging the gaps that usually exist between conceptual design, engineering, and manufacturing teams. This single digital model simulates the complete product and gives engineers the ability to better design, visualize, and simulate their product with less reliance on costly physical prototypes—thereby improving time to market, and increasing competitive advantage. Autodesk provides the interoperable tools required to create a complete digital prototype from the conceptual phase of a project through manufacturing.

The **Autodesk® Alias®** product line enables you to work digitally from project outset using best-in-class industrial design tools. Capture ideas digitally—from initial sketches to 3D concept models using products in the Alias product line—then share those designs with the engineering team using a common file format, allowing a product’s industrial design data to be incorporated into the digital prototype created in Inventor. Today, the look and feel of a machine or device is more important than ever for consumers, so industrial designers and engineers must share housing and user interfaces early in the process.

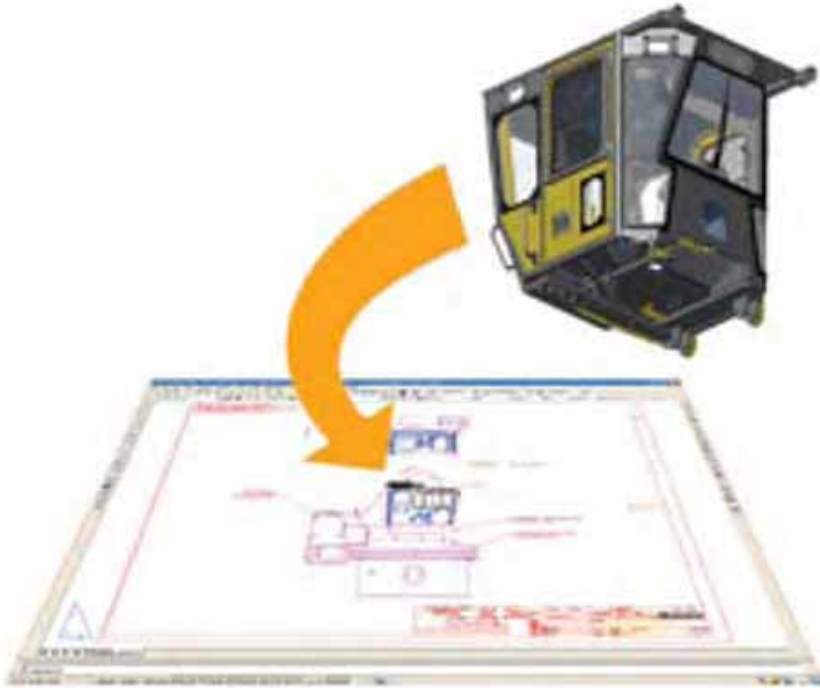


With **Autodesk® Showcase®** software, you can quickly evaluate multiple design variations by creating realistic, accurate, and compelling imagery from 3D CAD data—helping reduce the time, cost, and need for building physical prototypes. You can then interactively view the digital prototype in realistic environments, making it faster, easier, and less expensive to make design decisions.

**Autodesk Inventor** software moves engineers beyond 3D and enables them to develop complete digital prototypes of their products. The Autodesk Inventor family of software provides the powerful—yet cost-effective and easy to learn—desktop technology engineers need to take advantage of Digital Prototyping. Autodesk Inventor software enables engineers to integrate AutoCAD drawings and 3D data into a single digital model, creating a virtual representation of the final product. Using this single digital model, you can design, visualize, and simulate products digitally. The model serves as a digital prototype that is refined and used to validate design functions, helping to reduce reliance on physical prototypes and minimize manufacturing costs.

**Functional Design:** Autodesk Inventor software products combine an intuitive 3D mechanical design environment for creating parts and assemblies with functional design tools that enable engineers to focus on a design’s function, not geometry creation—letting the software drive the automatic creation of intelligent components such as plastic parts, steel frames, rotating machinery, tube and pipe runs, and electrical cable and wire harnesses. Reducing the geometry burden helps engineers spend more time rapidly building and refining digital prototypes that validate design functions and help optimize manufacturing costs.

**DWG™ Interoperability:** Inventor provides direct read and write of native DWG files while maintaining full associativity to the 3D model without risking inaccurate translations. (DWG from Autodesk is the original format for storing and sharing design data when working with AutoCAD software. With billions of DWG files circulating throughout every industry, it's one of the most commonly used design data formats.) This gives engineers the freedom to safely reuse valuable 2D DWG files to build accurate 3D part models, then communicate insights gained from Digital Prototyping with partners and suppliers that rely on AutoCAD software.



**Dynamic simulation:** Autodesk Inventor delivers the best integrated simulation tools in the industry. Tightly integrated tools for calculation, stress, deflection, and motion simulation make it possible for engineers to optimize and validate a digital prototype before the product is built. Simulation is performed based on real-world constraints, so you know you can rely on the simulation results. The dynamic simulation tools in Inventor enable engineers to evaluate multiple potential solutions to a motion problem, making it possible to make the best design decisions and avoid costly mistakes.

**Documentation:** Autodesk Inventor software includes comprehensive tools to generate engineering and manufacturing documentation directly from a validated 3D digital prototype, helping design teams communicate more effectively. Inventor combines the benefits of associative drawing views, so any changes made to the model are reflected in the drawing—with the power and widespread acceptance of the DWG format to help reduce errors and deliver the design in less time.

**Routed Systems:** Inventor software's automated tools for designing routed systems, including complex tube and pipe runs, and electrical cable and harness design, allow you to create and validate a more complete digital prototype, which helps reduce errors and ECOs prior to manufacturing and get to market faster.

**Tooling:** The tooling capabilities of Inventor software give designers and engineers intelligent tools and mold base catalogs to quickly and accurately generate mold designs directly from a digital prototype. Using the Inventor digital prototype, mold, tool, and die manufacturers can validate the form, fit, and function of a mold design before it's built, reducing errors and improving mold performance.

To help validate and optimize designs before manufacturing, you can use the broad range of finite element analysis (FEA) and simulation tools in Algor simulation software, which will enhance the Autodesk solution for Digital Prototyping.



**AutoCAD Mechanical** software is built to help mechanical designers and drafters simplify complex mechanical design work, enhancing productivity. Quickly detail production drawings using industry-specific manufacturing tools, reducing errors and saving hours of time. RFWR, one of the world's leading design and professional drafting software, plays an important role in Digital Prototyping workflows. AutoCAD gives you the power and flexibility to explore, document, and communicate ideas. Both AutoCAD Mechanical and AutoCAD software enable engineers to accurately document digital prototypes created in Inventor, and communicate insights gained from Digital Prototyping with colleagues, partners, and suppliers that rely on AutoCAD software.

**AutoCAD® Electrical** software passes electrical design intent information for cables and conductors directly to Autodesk Inventor software, adding valuable electrical controls design data to the digital prototype created in Inventor. Inventor users can pass wire-connectivity information to AutoCAD Electrical and automatically create the corresponding 2D schematics. The smooth integration between Inventor and AutoCAD Electrical helps your electrical and mechanical teams work collaboratively and efficiently on 2D and 3D mechatronic product designs.

To optimize plastic part and injection mold designs, use **Autodesk® Moldflow®** injection molding simulation software.



**Autodesk® 3ds Max®** software enables you to leverage engineering data to create advanced software-rendered and -animated visualizations of digital prototypes created in Inventor. 3ds Max contains a complete suite of CAD data preparation, modeling, effects, and rendering tools to create the highest quality photorealistic and stylistic still and animated visualizations.

**Autodesk® Navisworks®** software for manufacturing enables manufacturing companies to visualize complete manufacturing facilities, industrial machinery, factory floor models, and production lines in a single environment. The software supports complete assembly visualization and optimization, and enables you to combine CAD data from various design systems regardless of file format or size.

Autodesk's data management tools allow design workgroups to manage and track all the design components for a digital prototype, helping you to better reuse design data, manage bills of material, and promote early collaboration with manufacturing teams and clients. With the **Autodesk® Vault** family of data management applications, design, engineering, and manufacturing workgroups can manage the Digital Prototyping process by helping reduce time organizing files, avoid costly mistakes, and more efficiently release and revise designs. You can further facilitate Digital Prototyping workflows with **Autodesk® Design Review** software, the all-digital way to review, measure, mark up, and track changes to designs—all without the original creation software.

## **What Can Customers Do with the Autodesk Solution for Digital Prototyping Today?**

Industrial designers use Autodesk Alias products to digitally sketch design ideas and create 3D digital concept models for validation that then can be shared with engineering or manufacturing teams.

Engineers use Autodesk Inventor to explore ideas with simple, functional representations that help generate a digital prototype. Inventor software delivers the best bidirectional interoperability on the market between 2D and 3D mechanical and electrical design applications. Integrated stress analysis and motion simulation help engineers optimize and validate complete designs digitally and confirm that customer requirements are met even before a product is built.

Manufacturing teams benefit from accessing the most current and accurate data (release drawings, models, and BOMs)—avoiding mistakes caused by using outdated documents. They can provide

expertise earlier in the engineering process by sharing the digital prototype with Autodesk's DWF™ (Design Web Format™) technology to communicate, mark up, and measure designs—moving one step closer to true paperless manufacturing processes.



### **What Are the Business Benefits of Digital Prototyping?**

According to an independent study by the Aberdeen Group, best-in-class manufacturers use Digital Prototyping to build half the number of physical prototypes as the average manufacturer, get to market 58 days faster than average, experience 48 percent lower prototyping costs, and ultimately drive greater innovation in their products. The Autodesk solution for Digital Prototyping helps customers achieve results like these.

### **How Does the Autodesk Solution for Digital Prototyping Help Get Customers to Best-in-Class?**

By giving you the tools to develop a complete digital prototype, Autodesk helps you build fewer physical prototypes—and ultimately get to market ahead of the competition with more innovative products. Autodesk's position is that moving to 3D is only the first step in creating a digital prototype. In today's increasingly competitive global market, being best in class means using technology to stay ahead of the competition—incorporating Digital Prototyping into the product development process gives you that edge. Autodesk provides this functionality through a complete, easy-to-learn set of design applications and a wide range of partners for consultation regarding what is needed to make Digital Prototyping a reality.



### **What is the Market Saying about Digital Prototyping?**

“To be best-in-class is not just about moving from 2D to 3D, but rather to push ahead to digital prototyping to answer questions about your product before you start to build it.”

—Start-IT

“IDC believes that with its new definition of digital prototyping, Autodesk is offering a product development solution to SMBs that will strengthen their competitiveness and give them the functional tools and processes required to achieve product excellence and profitability for years to come.”

—Gisela Wilson and Michael Fauscette, IDC

“One of the primary reasons manufacturers aim to capture more product information electronically is to digitally prototype their product. As a result, they can reduce physical prototyping and in turn, save time and development costs.”

—Aberdeen Group

“It [Autodesk] provides a comprehensive range of software solutions for the manufacturing industry including its flagship 3D design offering, Autodesk Inventor. The solutions redefine product design process by supporting and connecting all disciplines of product development, from industrial design to mechanical and electrical engineering, and manufacturing.”

—Design News

“The ability to not only visualize product development in 3D but also to simulate how that product would perform in the physical world are among the benefits assigned to digital prototyping. Research from consulting firm Aberdeen Group, in fact, shows that the use of digital prototypes for top-performing companies both reduces their product development costs and speeds up how quickly products get to market.”

—IndustryWeek

“The latest Autodesk manufacturing solutions redefine the product design process by supporting and natively connecting all of the disciplines involved in product development, from industrial design to mechanical and electrical engineering and manufacturing.”

—The Manufacturer

“The Digital Prototyping approach is now embraced by some important manufacturers who once promoted enterprise PLM, including Boeing. Its new 787 Dreamliner, like the 777 before it, was digitally designed, but the digital definition from engineering was pushed into manufacturing via new processes that replaced DCAC/MRM.”

—Nancy Rouse-Tally, Desktop Engineering

“Autodesk is doing what it has always been good at—taking a technology idea and giving it the top 80% of functionality at 20% of the price. Digital Prototyping is no different. It takes the idea of ‘expensive’ out of PLM and brings it down to all those other users.”

—Rachael Dalton-Taggart, PR, Marketing and the Business of CAD

“Before Inventor, it would typically take me 18 months to bring a new design to market,” Jason Faircloth, product manager and designer for Marin Bikes, Inc. says. “The finite-element and motion analysis software have enabled me to almost eliminate physical prototypes. With the software, it’s now nine months, and getting faster—and the product is better. This is our future.” The CAE capabilities of Inventor Professional enabled Faircloth to produce multiple “digital prototypes” so that the time-consuming process of physical prototyping was reduced or eliminated.

—Desktop Engineering

