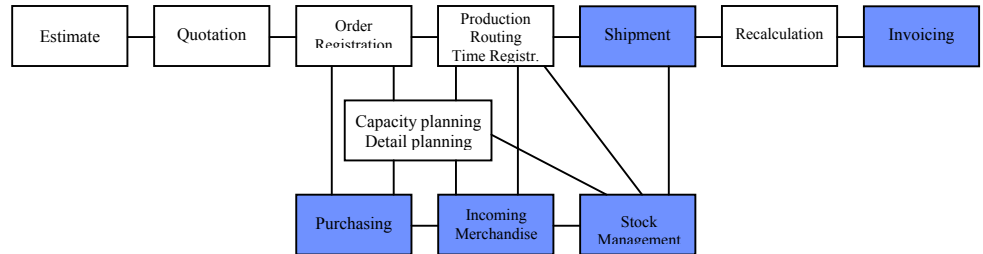


Plan-de-CAMpagne

Logistics Module

The Plan-de-CAMpagne Logistics Module consists of the production steps Purchasing, Stock Management,



Registration of Incoming Merchandise, Incoming Invoices, Shipments and Invoicing. After invoicing the link with the accounting packet takes place.

Operating Procedure

As is the case with all the steps within Plan-de-CAMpagne, the steps within the Logistics Module can also be carried out in a relatively random order. Plan-de-CAMpagne is in charge of monitoring the precision and completeness with this.

As soon as an order is imported into Plan-de-CAMpagne, a number of steps are carried out: allocations are made from the stock materials, an order line is created from materials which are purchased by order and, finally, the order is placed in the control centre.

The Control Centre

The Control Centre is an aid which is worthwhile to use if there are a lot of (small) orders open at the same time. With the help of the Control Centre, the user can decide when an order can be released for production. In addition, the user can see which orders are on the shop floor and which ones are still waiting for materials. This is displayed by means of colours by which the user can see all this information at a glance.

Purchasing List

The Purchasing List is a list of all the purchasing work in progress: items which must still be ordered, items which are still to arrive in-house and for which an invoice has still not been received, etc. The Purchasing List allows one to see in detail what still needs to happen in the area of purchasing: which merchandise has been reported in-house, which merchandise has been rejected and which merchandise is late. Purchasing can be by order or by stock.

Startdate	Planning	Readydate	Mother	Level	Bl	Production number	Wait sta	Calcula	Description	Purchased	Received	Rejected	Customer	Subcontract	Suncont	Subcontr	Certificat	Calculat	Delivery date
13/04/2005		13/04/2005	00054	0	0	00172	7	7	Lassamenstell	●	○	○	Te Strake	○	○	○	○	00054	14/04/2005
14/03/2005		18/03/2005	00059	0	0	00181	7	8	Lassamenstell	○	○	○	Linssen Yachts	●	○	○	○	00059	30/03/2005
22/03/2005		30/03/2005	00227	0	0	00433	7	7	Lassamenstell	○	○	○	Ilter Electronics	○	○	○	○	00227	01/04/2005
24/03/2005		25/03/2005	00089	0	0	00478	7	8	Leiplaat	●	○	○	Metas Machinefabriek B.V.	○	○	○	○	00089	30/03/2005
18/03/2005		18/03/2005	00375	1	3	00498/003	7	7	Mastekhoek	○	○	○	Bouwbedrijf De Klant	○	○	○	○	00377	21/03/2005
18/03/2005		31/03/2005	00298	0	0	00459	7	7	Metrijs	○	○	○	Steinbusch B.V.	○	○	○	○	00298	08/04/2005
17/03/2005		17/03/2005	00053	0	0	00175	7	7	Montageplaat	○	○	○	Johnson Corporation Holland B.V.	○	○	○	○	00053	22/03/2005
15/03/2005		17/03/2005	00077	0	0	00395	7	7	Montageplaat	○	○	○	Buhrs Zaandam	○	○	○	○	00077	01/04/2005
14/03/2005		18/03/2005	00085	0	0	00397	7	7	Montageplaat	○	○	○	Mogema Plaatbewerking	○	○	○	○	00085	23/03/2005
14/03/2005		14/03/2005	00078	0	0	00398	7	7	Montageplaat	○	○	○	Buhrs Zaandam	○	○	○	○	00078	15/03/2005
15/03/2005		16/03/2005	00105	0	0	00403	7	8	Montageplaat	○	○	○	Steinbusch B.V.	○	○	○	○	00105	22/03/2005
11/03/2005		16/03/2005	00115	0	0	00408	7	7	Montageplaat	○	○	○	Kruisen Metaalcomponenten BV	○	○	○	○	00115	16/03/2005



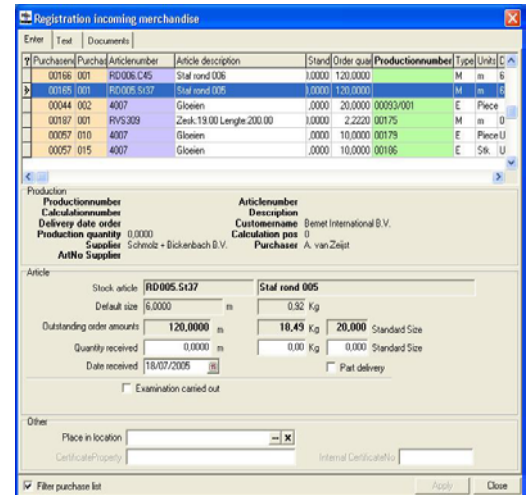
Subcontracting also goes along with purchasing. Because of this, comprehensive monitoring occurs with the ordering, shipping and return of products. The automatic generation of purchase lines occurs upon giving an order to production or if the stock falls below a minimum stock level. In addition, purchase lines can be manually generated from the material file.

The system also indicates a preferred supplier, an order recommendation and a purchase price. These items can be changed by the purchaser before the order is shipped.

Incoming Merchandise and Invoices

Because Plan-de-CAMPagne works with weight and volume factors, they can be entered with another unit than appears in the order or by which the calculation is made. This prevents difficult calculations with in-house reporting. Partial deliveries are automatically supported by the system. With this the user can indicate whether he/she does or does not agree with shipping fewer items.

For an accurate recalculation, the purchase invoices can also be recorded in-house. By linking with an accounting packet these can be included, so that the user only has to input them once.



Shipment and Invoicing

With the creation of a packing list, Plan-de-CAMPagne can check whether there are more orders (or parts of orders) which must be made ready for the same client. These can then be combined in the same shipment. If a credit limit is being worked with, the shipment will automatically be blocked the moment that the credit limit is exceeded. With authorisation it may be possible to cancel (overwrite) this feature. In addition, the user can also print delivery notes.

After the packing list has been made, the invoice can be printed out. It is possible to put multiple orders on a single invoice, and extra lines such as freight costs can also be placed on the invoice.

Logistics Documents

All documents within Plan-de-CAMPagne are made with the report generator, including the logistics documents. This gives the user the complete freedom to choose an individual layout. The user can indicate how many copies must be made and, if necessary, whether there is anything else which must be printed in multiple copies. It is possible to link this operation directly to a client. Thus when an order, packing list, delivery note and invoice are created, the correct layout is then always chosen.



Bemet International BV
Fokkerstraat 32
NL 3905 KV Veenendaal
Postbus 1040
NL 3900 BA Veenendaal
Tel. 0031-318-49.58.58
Fax 0031-318-55.16.11
KvK Utrecht 30158627
info@bemet.nl
www.bemet.nl